

SUMMER 2024

NJY CAMPS INFO KIT



Important things to know for the upcoming summer

CONTACT INFO:

BETWEEN 8:00 AM & 9:00 PM 570-296-8596



CAMP NAH-JEE-WAH (NJW) EXT. 109 NJW@NJYCAMPS.ORG



CEDAR LAKE CAMP (CLC) EXT. 147 CLC@NJYCAMPS.ORG



NJY TEEN CAMP (TAC) EXT. 152 TAC@NJYCAMPS.ORG



ROUND LAKE INCLUSION EXT. 145 RLC@NJYCAMPS.ORG

AFTER 9:00 PM **---** **→** 570-296-8596 & FOLLOW PROMPTS

FOR SUPPORT LOGGING IN/TRANSPORTATION/FORMS/BAGGAGE:
EXT. 177 NJYOFFICE@NJYCAMPS.ORG

IMPORTANT DATES:

TUESDAY, JUNE 25TH - FIRST DAY OF CAMP

SUNDAY, JULY 21ST - LAST DAY OF 1ST SESSION

MONDAY, JULY 22ND - FIRST DAY OF 2ND SESSION

TUESDAY, AUGUST 13TH - LAST DAY OF CAMP

SHORT STAYS:
JUNE 25 - JULY 7
JULY 22 - AUGUST 4

GIRLS

DIVISIONS

BOYS

CAMP NAH-JEE-WAH

ABI	ENTERING GRADES 1-4	ASHER
NAOMI	ENTERING GRADE 5	DAN
HANNAH	ENTERING GRADE 6	LEVI

CEDAR LAKE CAMP

MIRIAM	ENTERING GRADE 7	JOSEPH
ESTHER	ENTERING GRADE 8	REUBEN
GOLAN	ENTERING GRADE 9	MASADA

NJY TEEN CAMP

ENTERING GRADES 10 & 11

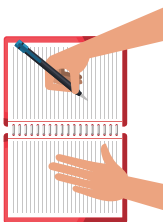
ROUND LAKE

GRADES 1-9 - SEE ABOVE
GRADES 10+ - TEEN VILLAGE

COMMUNICATIONS

Writing

Your Child's Name
Camp Name
570 Sawkill Road
Milford, PA 18337



Pictures

Download the Companion App
for daily pictures!



Emailing

Send emails through
the Companion App. Emails to
campers are printed &
distributed, like letters, daily.



*Campers CANNOT receive
attachments in their emails

CAMP ESSENTIALS!



ORDER YOUR GEAR AT NJYCAMPS.ORG/CAMPSPOT



REQUIRED UNIFORM INCLUDES:

- 1 Camp hooded sweatshirt (gray)
- 1 Camp t-shirt (white)
- 1 Camp t-shirt (green)
- 1 Camp t-shirt (yellow/gray)
- 1 Camp Pinnie (Reversible)

CLOSED-TOE SHOES

NJY Camps adheres to a closed toe shoe policy for everyone's safety. Crocs can be worn around camp, while flip-flops can only be used for shower-time.



BANQUET

On the last night of camp each session we get dressed up to celebrate the amazing summer we had together. Don't forget to pack a nice outfit! (Put it in a ziploc bag to ensure it stays clean)

BAGGAGE & TRANSPORTATION

Register with Door-Va-Door to schedule a pick-up for your child's luggage.

This can be done by visiting:

<http://www.doorvadoor.com/shop>



DOOR-VA-DOOR TRUCKING

We all have baggage.



- Bus transportation will be available for 2024, carry-on bags only.
- When you drive your children to camp, you will drop them off, give them a hug and kiss goodbye, and then depart. This is similar to a school drop-off line.
- Baggage can be shipped (for an extra fee) or driven to camp

MEDICAL

Complete your child's medical forms at [NJYHome](#).

KEYSTONE
Professional Pharmacy

If your child takes daily medication*, you must register with Keystone Pharmacy [here](#).

All medications** including vitamins must be sent in a blister-pack calendar card.

*Inhalers, Epi-Pens, and Growth Hormone shots, **DO NOT** need to be ordered through Keystone.

**No gummy medications of any kind are permitted

PACKAGES

Please limit packages as much as possible.



Remember that **food is prohibited**. If you send food, it cannot be returned and will be donated.



PROGRAM ADD-ONS

THESE CAN BE ADDED IN THE "ADDITIONAL OPTIONS" FORM ON YOUR CAMPER'S ACCOUNT

TOTAL SPECIALTY CAMPS (TSC)



Take your abilities to the next level with 3+ hours a day of training from skilled professionals in soccer, basketball, baseball, and tennis.



LEARN MORE AT TOTALSPECIALTYCAMPS.ORG



Whether you're an advanced rider, or it's your first time, horseback riding is for all experience levels!



HORSEBACK RIDING

A FEW OTHER THINGS...



BUNK REQUESTS

SUBMIT



- Bunks are created according to session.
- Camp administration will make final decisions that best meet the needs of every camper.
- Complete the online form for all requests.



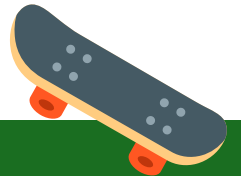
MONEY



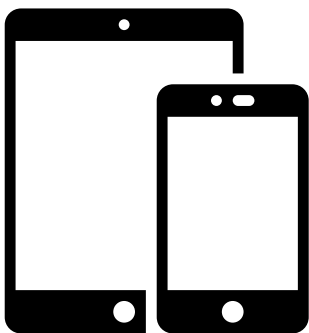
- Spending money is recommended for out-of-camp trips. Some locations are cashless, gift cards may be the best option versus cash.
- Please clearly label envelopes with your child's name, division, and amount.



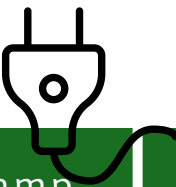
EQUIPMENT



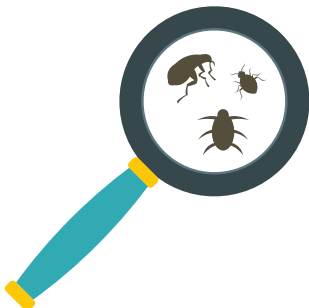
- NJY has all necessary sports equipment.
- If you do want to send your child with gear, please ensure it is properly labeled.



ELECTRONICS



- The electronics policy varies from camp to camp, meeting the needs of each camper group.
- Please see more specific information in your child's account.



LICE



- If your child arrives to camp with lice you will incur a \$250-\$400 fee for the lice to be removed by an outside professional vendor.